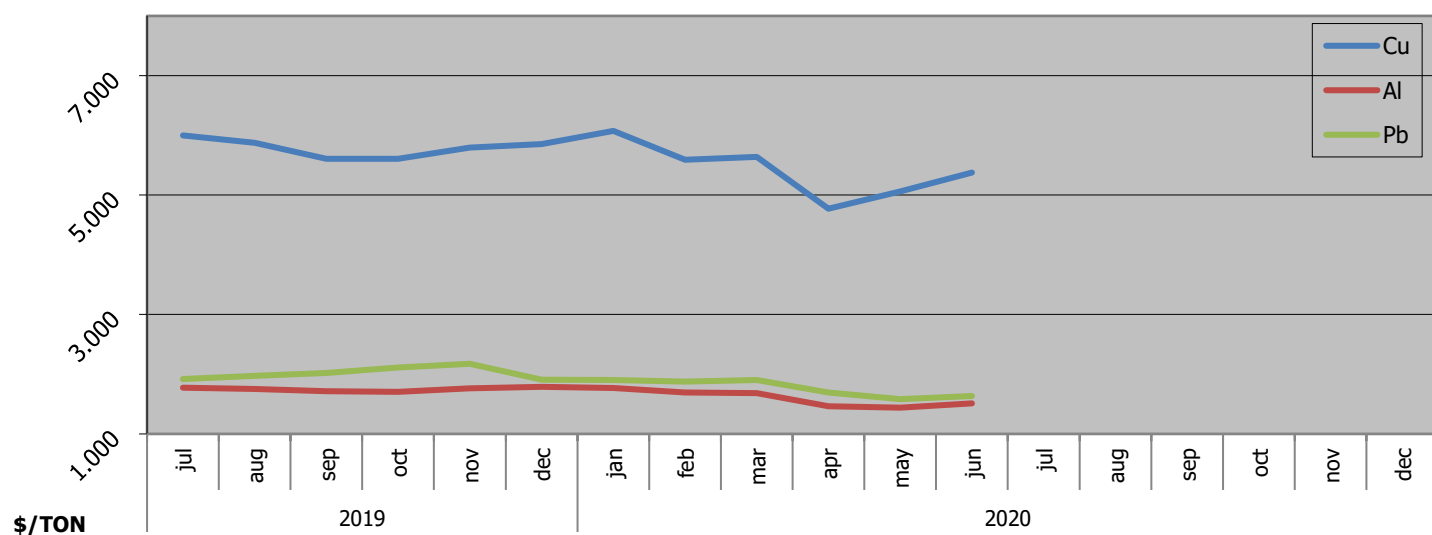
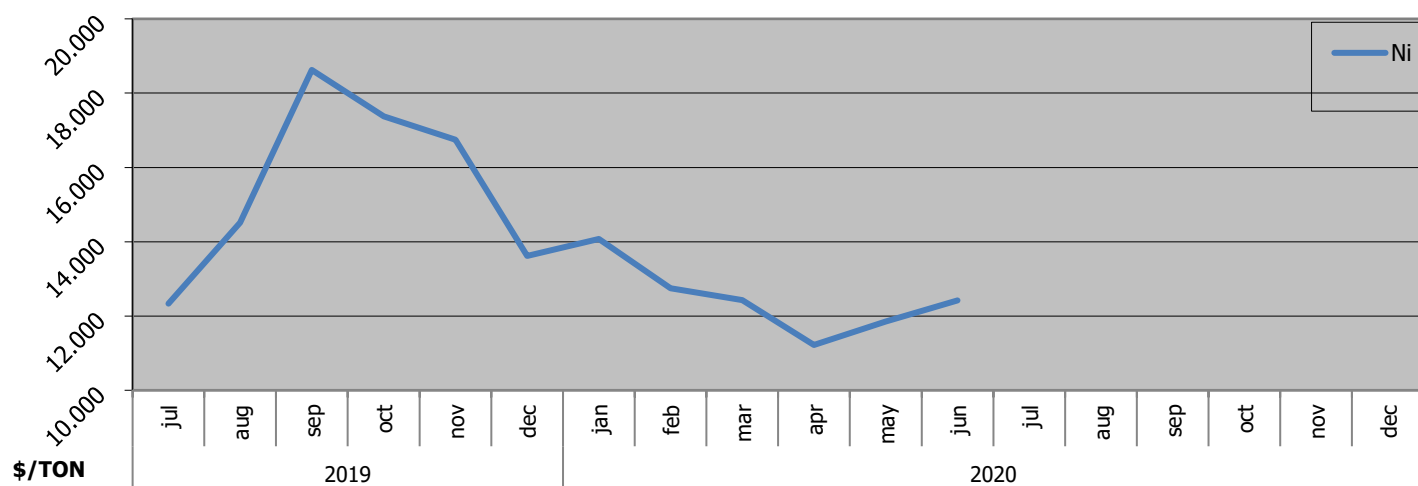
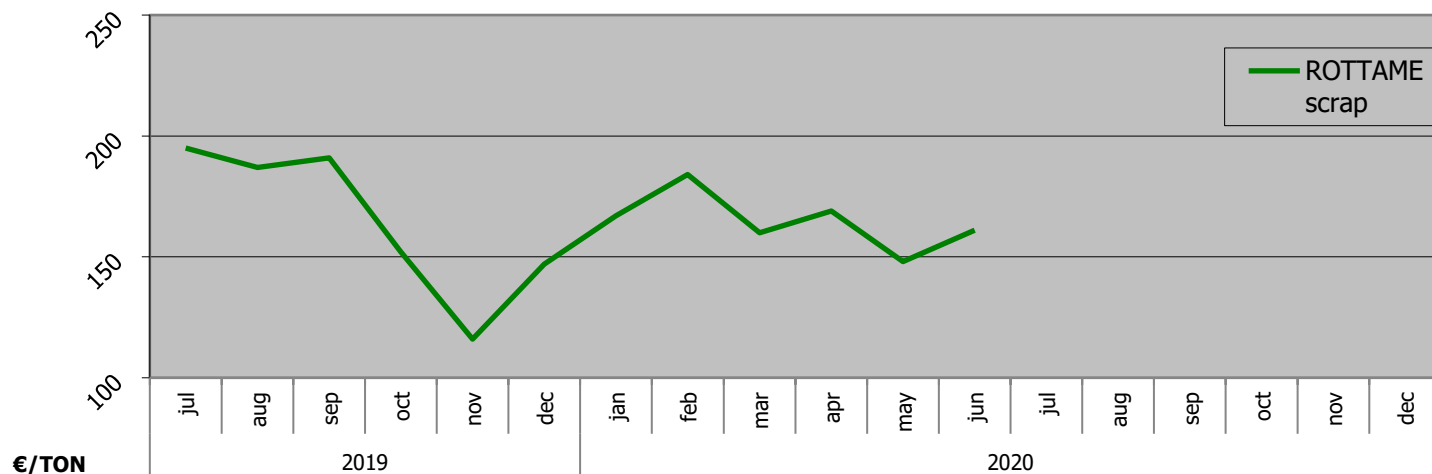
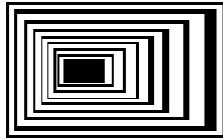


**OSCILLAZIONE DEL ROTTAME E DI ALCUNI ELEMENTI DI LEGA (base LME di Londra)**  
**FLUCTUATION OF SCRAP AND OF SOME ALLOYING ELEMENTS (based on London's LME)**  
**GIUGNO / JUNE 2020**



**SIDEX**

solutions provider for the steel industry



Dasa-Rägister

UNI EN ISO 9001:2015  
IQ-0120-01

**OSCILLAZIONE DEL ROTTAME E DI ALCUNI ELEMENTI DI LEGA (base LME di Londra)**  
**FLUCTUATION OF SCRAP AND OF SOME ALLOYING ELEMENTS (based on London's LME)**  
**GIUGNO / JUNE 2020**

valore value	unità unit	2019						2020											
		jul	aug	sep	oct	nov	dec	jan	feb	mar	apr	may	jun	jul	aug	sep	oct	nov	dec
<b>ROTTAME scrap</b>	<b>€/Ton</b>	195	187	191	152	116	147	167	184	160	169	148	161						
<b>Ni</b>	<b>\$/TON</b>	12.330	14.515	18.625	17.375	16.745	13.620	14.070	12.745	12.430	11.220	11.853	12.418						
<b>Cu</b>	<b>\$/TON</b>	5.998	5.875	5.609	5.609	5.795	5.855	6.075	5.593	5.639	4.772	5.061	5.376						
<b>Al</b>	<b>\$/TON</b>	1.777	1.756	1.716	1.705	1.765	1.789	1.771	1.693	1.684	1.463	1.440	1.511						
<b>Pb</b>	<b>\$/TON</b>	1.921	1.973	2.019	2.112	2.175	1.911	1.903	1.878	1.904	1.692	1.583	1.635						

**I valori degli elementi di lega sono espressi in \$/TON, e rappresentano il valore ufficiale all'LME di Londra al primo giorno lavorativo del mese di riferimento.**

**The values of alloying elements are indicated in \$/TON, and represent the official value at London's LME on the first working day of the month.**

**Dove i campi sono vuoti i valori ufficiali non sono stati ancora pubblicati e verranno aggiornati appena disponibili.**

**Where fields are empty the official values have not been published yet, and will be updated as soon as they become available.**

SIDEX s.r.l. - Via Andrea Costa 112/2U - 40065 Rastignano di Pianoro (BO) - Italy  
 ☎: +39-051-62.60.585 - 📠: +39-051-62.60.604 - ✉: info@sidex.it - 🌐: www.sidex.it  
 P.IVA (VAT): IT03700370376 - R.E.A. BO: 309270 - Capitale sociale: € 10.400,00 i.v.